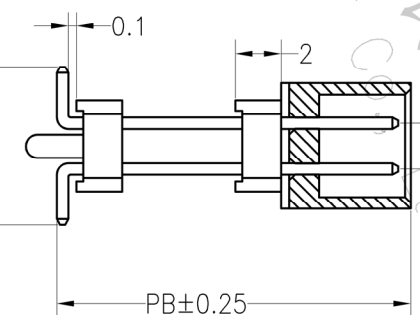
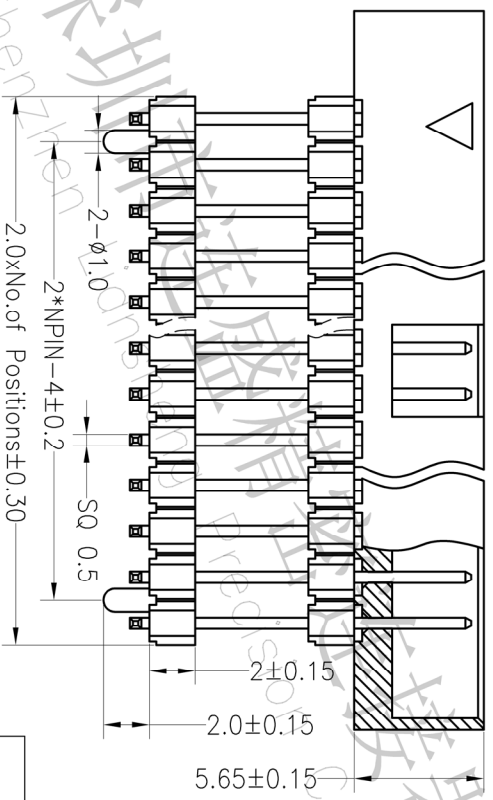
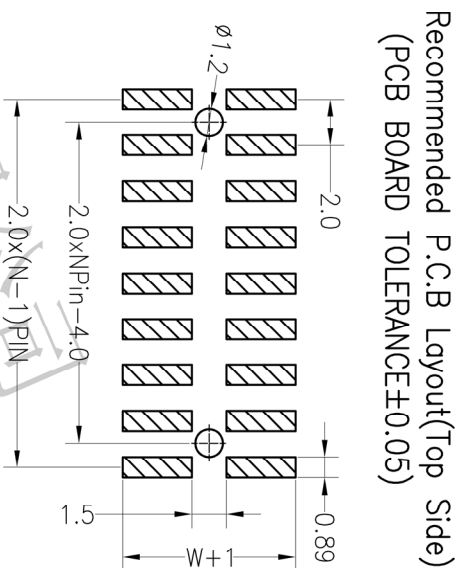
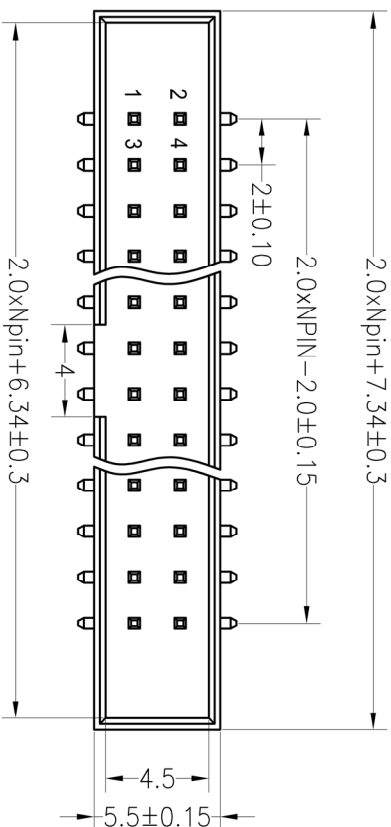


# RoHS

## SPECIFICATIONS

Rated Current:1.5AMP  
 Contact Resistance:20mΩ Max  
 Withstand Voltage:400V AC/DC  
 Insulation Resistance:800MΩ Min  
 Operation Temperature:-40°C to +105°C

Contact Material:Brass  
 Contact Plating:Au Over Ni  
 Insulator Material:Polyester(UL94V-0)  
 Standard: PA6T  
 Max.Processing Temp: 230°C for 30-60 seconds  
 (260°C for 10 seconds)

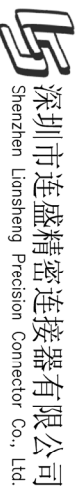


## Ordering Information

J	X	XXX	X	XX	X	X	X	XXXX
产品型号	间距	总Pin数	产品形态	电镀厚度	塑胶材料	颜色	包装形式	序列号
J=零件	1=1.27"	016=16P	1=DP	00=常规	1=PB1	1=黑色	1=散装	0001-9999
	2=2.0"		2=SM	01=1u"	2=LCP	2=灰色	2=盒装	
	4=3.96"		4=SM	02=2u"	3=PPS	3=白色	3=盒装	
	5=1.0"		5=垂直脚	03=3u"	4=PA66	4=蓝色	4=盒装	
	6=0.8"			SN=镀锡	5=PA6T	5=红色	5=盒装	
	7=5.08"			9=PA6T	6=黄色	6=黄色		
	A=1.27*2.54				7=灰白色	7=灰白色		

## Dimension antitheses list

ITEM	PB	PC	PW	H	W
001	10.9		6.5		
002					



深圳市连盛精密连接器有限公司  
 Shenzhen Liansheng Precision Connector Co., Ltd.

OPERATION		DRAW		SCALE		FIT		PART NO.	
X.X	±0.30			UNIT	mm				
X.XX	±0.20	CHECK		SIZE	A4			TITLE:	
X.XXX	±0.10			SHEET	1/1			2.0Box Npin H5.65+H2X2.0	
Angle	±3°	APPROVE		PROJ.				SMT 带柱	
DIM	TOL								

REV	DATE	MODIFICATION DESCRIPTION	CHANGE					
A0	2012.03.28	NEW DRAWING						
1								