

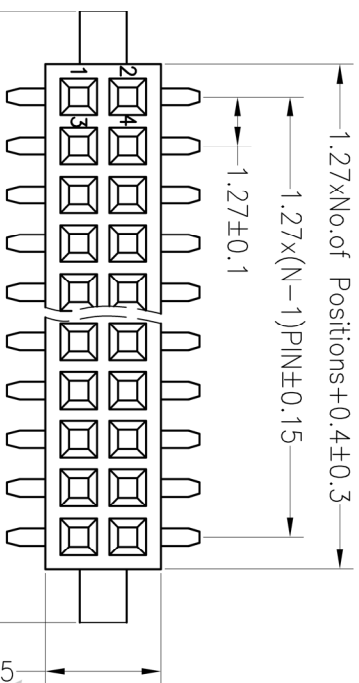
1 ROHS

2 3 4 5 6 7 8 9

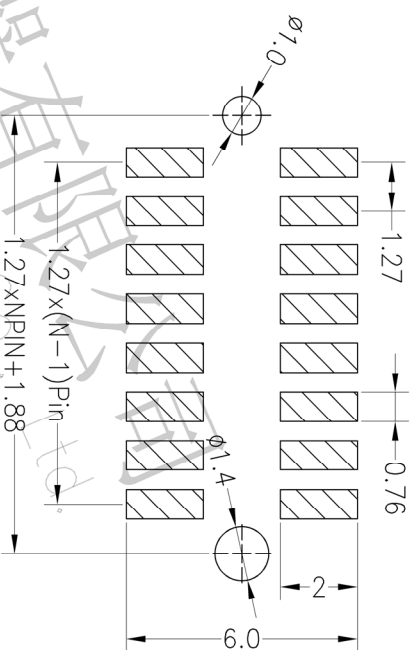
SPECIFICATIONS

Rated Current:1.0AMP
 Contact Resistance:20mΩ Max
 Withstand Voltage:500V AC/DC
 Insulation Resistance:1000MΩ Min
 Operation Temperature:−40°c to +105°c

Contact Material:Phosphor Bronze
 Contact Plating:Au Over Ni
 Insulator Material:Polyester(UL94V-0)
 Standard: PA6T
 Max.Processing Temp: 230°C for 30-60 seconds
 (260°C for 10 seconds)



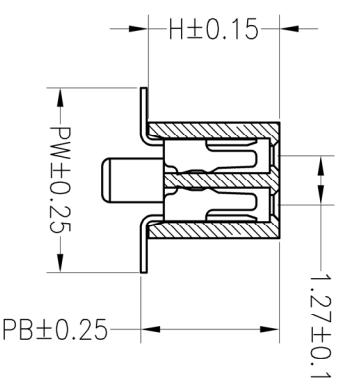
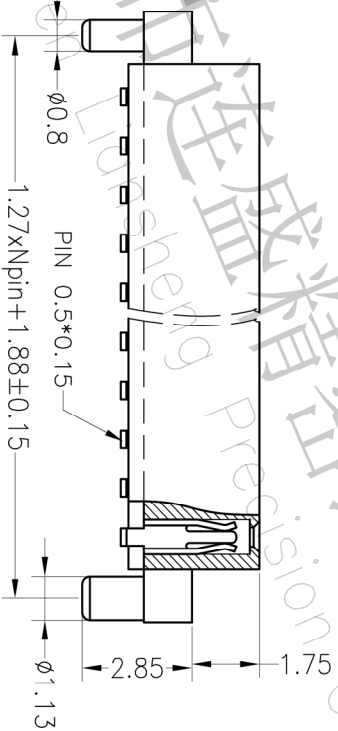
Recommended P.C.B Layout(Top Side)
 (PCB BOARD TOLERANCE±0.05)



Ordering Information

F X Q X XX X X XX X XXXX

产品类别 1=1.27 插板高度 1=标准 1-40P 产品规格 1=DIP 2=PAK 3=SMT 4=PPS 5=PA46 9=PA6T A=1.27x2.54
 引脚间距 2=2.0 2=2.54 3=2.54 5=3.0 6=0.8 7=5.08
 排数 1=标准 2=双排 3=三排 4=四排
 单排PIN数 1-40P
 产品规格 1=DIP 2=PAK 3=SMT 4=PPS 5=PA46 9=PA6T
 绝缘材料 1=BT 2=LCP 3=SM 4=PPS 5=PA46 9=PA6T
 电镀厚度 01=标准 02=30" SV=镀锡
 包装方式 1=裸板 2=卷板 3=带板 4=袋装 5=盒装



Dimension antitheses list

ITEM	PB	PC	PW	H	W	L
001	3.60	4.70	3.4	3.0		
002						

深圳市连盛精密连接器有限公司
 Shenzhen Linsheng Precision Connector Co., Ltd.

A 2012.04.18 NEW DRAWING

REV	DATE	MODIFICATION DESCRIPTION
A0	2012.04.18	NEW DRAWING

1 2 3 4 5 6 7 8 9

OPERATION		DRAW		SCALE		FIT	
X.X	±0.30			UNIT	mm		
X.XX	±0.20	CHECK		SIZE	A4		
X.XXX	±0.10			SHEET	1/1		
Angle	±3°	APPROVE		PROJ.			
DIM	TOL						

PART NO. 1.27FH 2xNPin H3.4 W3.0 SMT 带外柱

TITLE: