

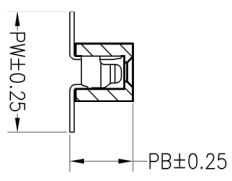
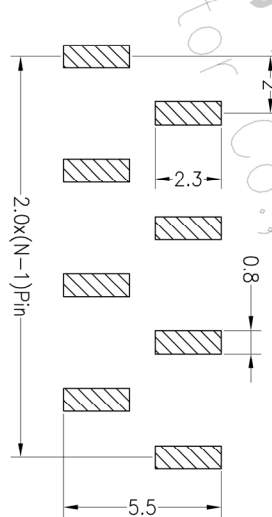
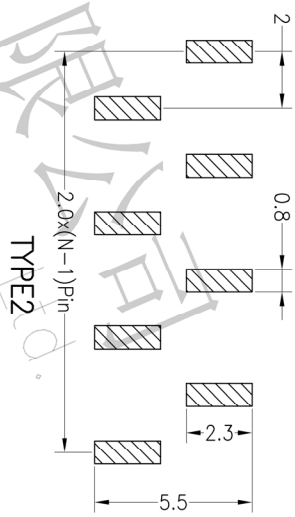
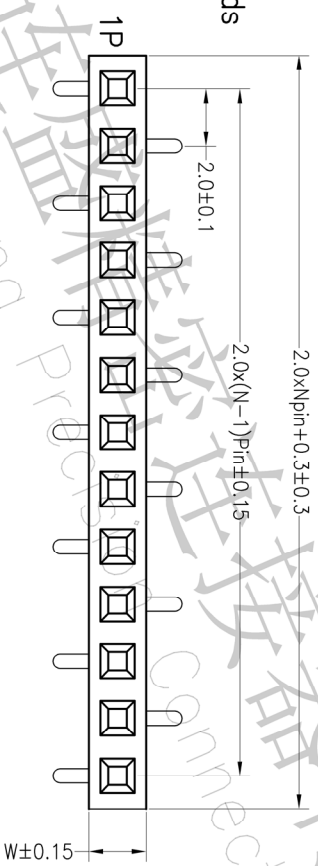
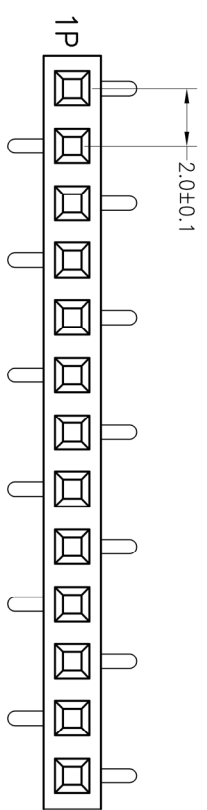
# ROHS

## SPECIFICATIONS

Rated Current:1.5AMP  
 Contact Resistance:20mΩ Max  
 Withstand Voltage:500V AC/DC  
 Insulation Resistance:1000MΩ Min  
 Operation Temperature:-40°C to +105°C

Contact Material:Phosphor Bronze  
 Contact Plating:Au or Sn Over Ni  
 Insulator Material:Polyester(UL94V-0)  
 Standard: PA6T  
 Max.Processing Temp: 230°C for 30-60 seconds  
 (260°C for 10 seconds)

Recommended P.C.B Layout(Top Side)  
 (PCB BOARD TOLERANCE±0.05)



ITEM	P8	Pc	PW	H	W	L
001	2.20		4.2	2.0	2.0	
002						

## Ordering Information

Pin数	插板数	插板间距	插板高度	插板类型	插板材料	插板镀层	插板厚度	插板长度	插板宽度	插板重量	插板公差	插板备注
1-127	8-42	1-1.27	1-1.27	1-1.27	1-1.27	1-1.27	1-1.27	1-1.27	1-1.27	1-1.27	1-1.27	1-1.27
2-254	2-254	2-2.54	2-2.54	2-2.54	2-2.54	2-2.54	2-2.54	2-2.54	2-2.54	2-2.54	2-2.54	2-2.54
4-508	4-508	4-5.08	4-5.08	4-5.08	4-5.08	4-5.08	4-5.08	4-5.08	4-5.08	4-5.08	4-5.08	4-5.08
8-1016	8-1016	8-10.16	8-10.16	8-10.16	8-10.16	8-10.16	8-10.16	8-10.16	8-10.16	8-10.16	8-10.16	8-10.16
16-2032	16-2032	16-20.32	16-20.32	16-20.32	16-20.32	16-20.32	16-20.32	16-20.32	16-20.32	16-20.32	16-20.32	16-20.32



深圳市连盛精密连接器有限公司  
 Shenzhen Liansheng Precision Connector Co., Ltd.

OPERATION		DRAW		SCALE		FIT		PART NO.	
X.X	±0.30			UNIT	mm				
X.XX	±0.20	CHECK		SIZE	A4				
X.XXX	±0.10			SHEET	1/1			TITLE:	2.0FH 1XNP SWT H=2.2
Angle	±3°	APPROVE		PROJ.					
DIM	TOL								

REV	DATE	MODIFICATION DESCRIPTION	CHANGE
A0	2012.04.18	NEW DRAWING	

1	2	3	4	5	6	7	8	9
---	---	---	---	---	---	---	---	---