

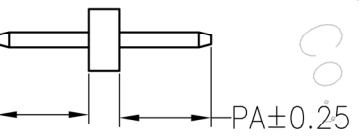
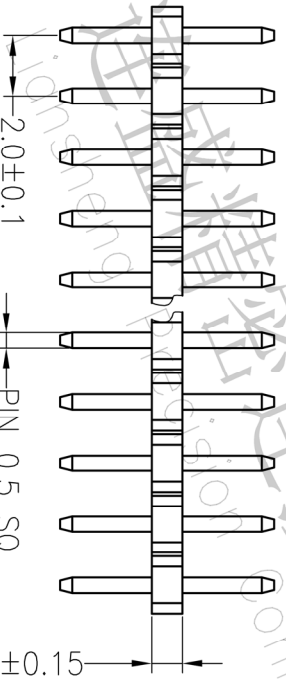
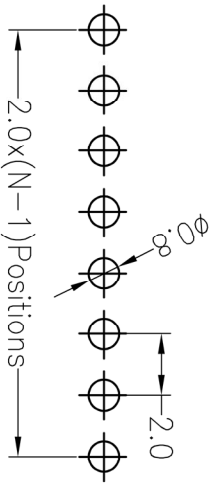
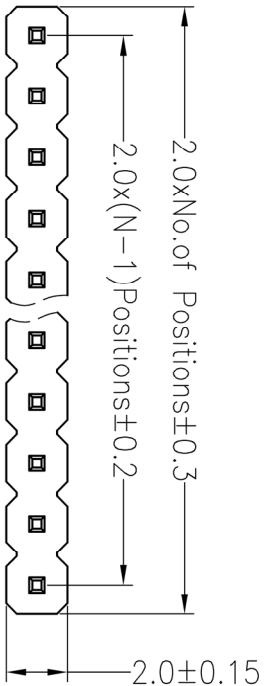
# RoHS

## SPECIFICATIONS

Rated Current:1.5AMP  
 Contact Resistance:20mΩ Max  
 Withstand Voltage:500V AC/DC  
 Insulation Resistance:1000MΩ Min  
 Operation Temperature:-40°c to +105°c

Contact Material:Brass  
 Contact Plating:Au Over Ni  
 Insulator Material:Polyester(UL94V-0)  
 Standard: PA6T  
 Max.Processing Temp: 230°C for 30-60 seconds  
 (260°C for 5 seconds)

Recommended P.C.B Layout(Top Side)  
 (PCB BOARD TOLERANCE±0.05)



## Ordering Information

P	X	X	X	XX	X	X	XX	X	XXXX
产品类别 P-排针	间距 1=1.27 2=2.0 3=2.54 4=3.96 5=1.0 A=1.27*2.54	塑胶高度 A=1.0 B=1.5 C=2.0 D=2.5	排数 1=单排 2=双排	单排PIN数 1~40P	产品形态 1=DP 2=PA 3=ST 4=ST 5=线芯脚	塑胶材料 1=BT 2=UP 3=PPS 4=PA46 5=PA6T 9=PA9T	电镀厚度 00=待选 01=1μ 02=2μ 03=3μ	包装方式 1=管装 2=卷装 3=盘装 4=袋装 5=盒装	序列号

ITEM	PA	PC	L
Alternate	2.00	2.00	5.00



深圳市连盛精密连接器有限公司  
 Shenzhen Liansheng Precision Connector Co., Ltd.

OPERATION		DRAW		SCALE		FIT		PART NO.	
X.X	±0.30			UNIT	mm				
X.XX	±0.20	CHECK		SIZE	A4				
X.XXX	±0.10			SHEET	1/1			TITLE:	
Angle	±3°	APPROVE		PROJ.				2.0PH H=1.0 1*NP DIP P12.0 P2.0 L=5.0	
DIM	TOL							A0.0 8U PA6T	
REV	DATE	MODIFICATION DESCRIPTION		CHANGE					
1		2	NEW DRAWING	4					
A0	2012.04.11	3		5					
1		4		6					
1		5		7					
1		6		8					
1		7		9					