

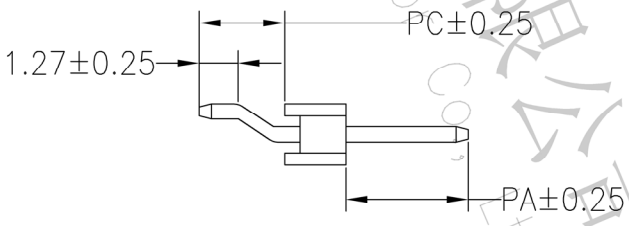
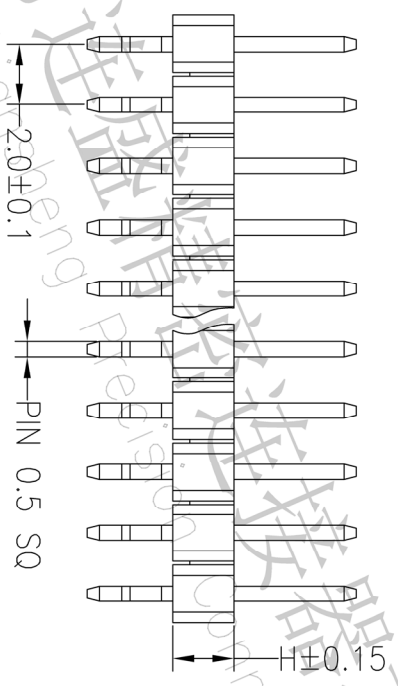
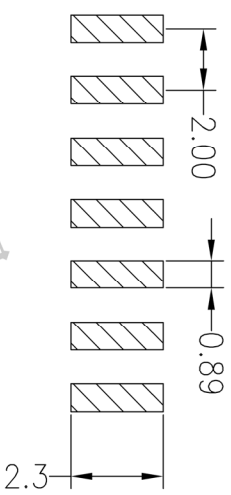
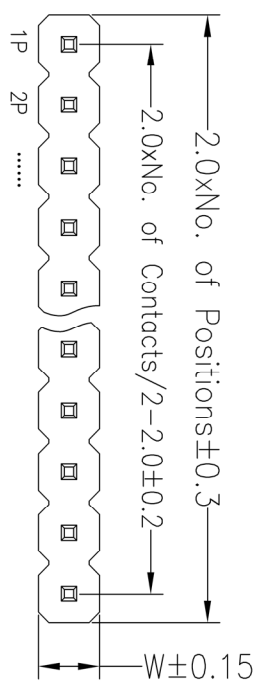
# RoHS

## SPECIFICATIONS

Rated Current: 1.5AMP  
 Contact Resistance: 20mΩ Max  
 Withstand Voltage: 500V AC/DC  
 Insulation Resistance: 1000MΩ Min  
 Operation Temperature: -40°C to +105°C

Contact Material: Brass  
 Contact Plating: Au or Sn Over Ni  
 Insulator Material: Polyester (UL94V-0)  
 Standard: PA6T  
 Max. Processing Temp: 230°C for 30-60 seconds  
 (260°C for 5 seconds)

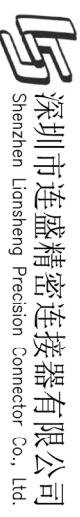
Recommended P.C.B Layout (Top Side)  
 (PCB BOARD TOLERANCE ±0.05)



## Ordering Information

P	X	X	X	XX	X	XX	X	XXXX	
产品类别 P-排针	间距 1=1.27 2=2.0 3=2.54 4=3.96 5=1.0 A=1.27*2.54	塑胶高度 A=1.0 B=1.5 C=2.0 D=2.5	排数 1=前排 2=双排	单排PIN数 1~40P	产品形态 1=DP 2=PA 3=SM 4=SH 5=线端脚	塑胶材料 1=PBT 2=LCP 3=PPS 4=PA46 5=PA6T 9=PA9T	电镀厚度 00=希规 01=1μ" 02=2μ" 03=3μ"	包装方式 1=管装 2=卷装 3=盘装 4=袋装 5=盘装	序列号

Dimension antitheses list						
ITEM	PA	PC	PW	L	H	W
001	4.00	2.80		9.00	2.0	2.0
Alternate						



深圳市连盛精密连接器有限公司  
 Shenzhen Liansheng Precision Connector Co., Ltd.

OPERATION		DRAW		SCALE		FIT		PART NO.	
X.X	±0.30	X.XX	±0.20	UNIT	mm	SIZE	A4	TITLE:	
X.XXX	±0.10	CHECK		SHEET	1/1	2.0PH 1XNP 卧贴			
Angle	±3°	APPROVE		PROJ.					
DIM	TOL								
CHANGE		MODIFICATION DESCRIPTION		DATE					
1		2		3		4		5	
REV		A0		2012.04.11		NEW DRAWING			
A		A		A		A		A	