

ROHS

Masterials

Pin: Brass, machined, (H59-3)
 Plating: Gold plated: 1.25u"m/50u"nickel, full gold
 Insulator body(black): PPS (UL94V-0)

Electrical

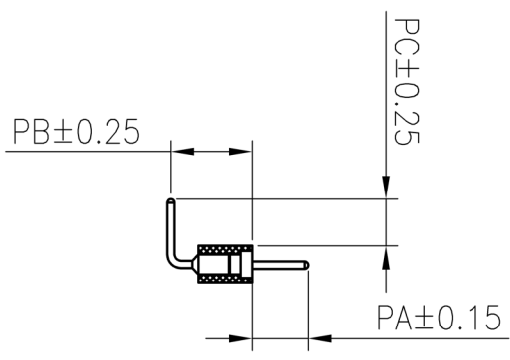
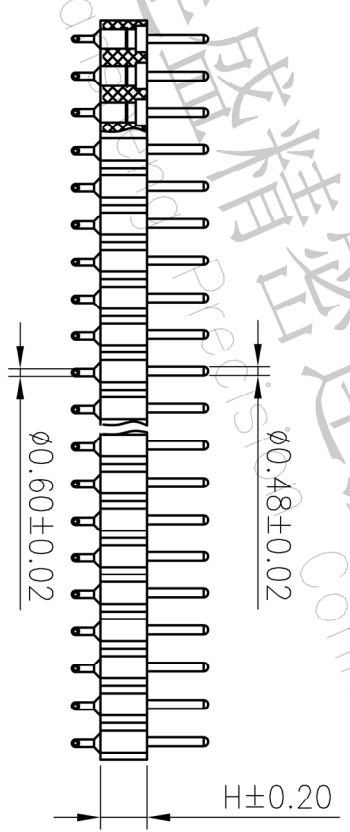
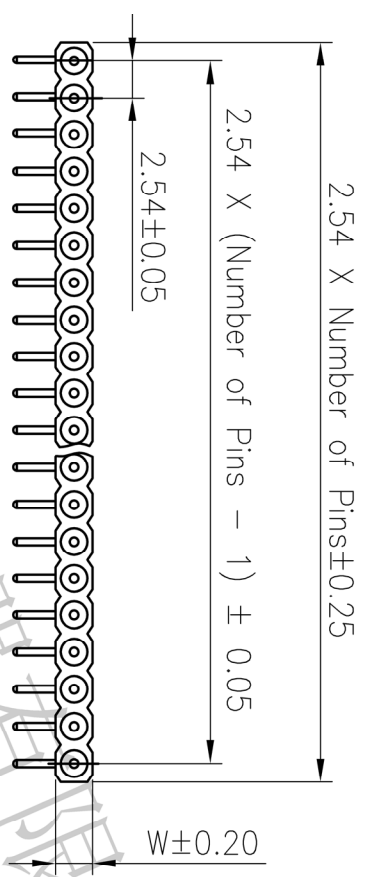
Current rating: 3 Amps/contact max.
 Contact resistance: 20mΩ
 Insulation resistance: 1000MΩ
 Operating voltage: 60 AC/DC

Mechanical

Operating temperature :Gold plated:-55°C to +105°C
 -67"H to +105"H
 Tin plated:-40°C to +105°C
 Soldering temperature:260°C, 10s max

Ordering Information

Type Pin Header	P	Pitch 254=2.54	Head Per Row 1-40P	Connector S: Straight R: Right M: SMT Z: Special	Insulator Option: B= BK-PA8T C= BK-PA8T D= BK-L0P S= Special	Material Option: A=PE, B=BG B=BOX C=Tube D=Tube+Cap E=Reef+Cap F=Reef+Mylar	Plating G1:1U" Gold G2:1.5U" Gold G3:2U" Gold G4:3U" Gold G5:5U" Gold S0:Sold Fish/Tin SK:Tin
-----------------	---	----------------	--------------------	--	--	---	---



ITEM	PA	PB	PC	L1	L2	L3	H	W
001	4.00	4.50	3.20	12.76			3.0	2.54

深圳市连盛精密连接器有限公司
 Shenzhen Liansheng Precision Connector Co., Ltd.

OPERATION		DRAW		SCALE		FIT		PART NO.	
X.X	±0.30			UNIT	mm		A4		
X.XX	±0.20	CHECK		SIZE	A4		1/1		
X.XXX	±0.10		APPROVE	SHEET	1/1			TITLE:	2.54X3.0 1*N.P 双头针 90°
REV	DATE	MODIFICATION DESCRIPTION		CHANGE	DIM	TOL	PROJ.		L=12.76
1		2		3				4	