

RoHS

1. 材质:

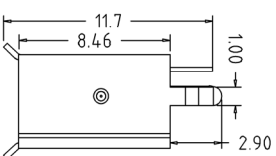
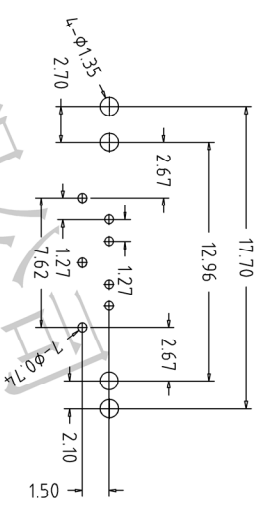
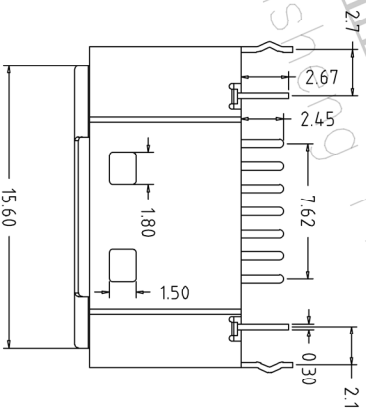
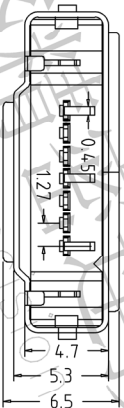
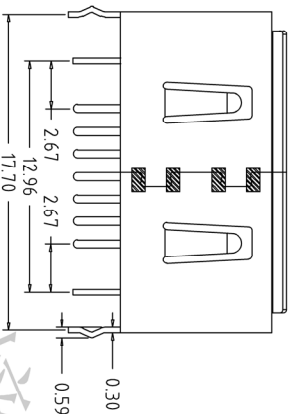
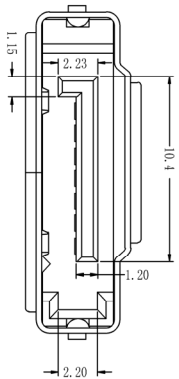
- 1.1 胶芯: LCP G/F UL94V-0 颜色: 黑色;
- 1.2 端子; 青铜. T=0.25 ±0.01mm(底镍50u", 镀锡100u", 接触区镀金1u", 3u", 15u");
- 1.3 铁壳: 马口铁. T=0.30 ±0.02mm, 先镀金镍100u" MIN, 镀亮锡50U" MIN;

2. 电气性能:

- 2.1 耐压: 500V AC/DC
- 2.2 绝缘: 1000MΩ min
- 2.3 温度: -55° C ~ +125° C

3. 测试要求:

- 3.1 塑胶外观无明显缩水、缺料;
- 3.2 端子表面不能扭曲、压伤、氧化;
- 3.3 接触电阻: ≤ 30mΩ



Ordering Information

S G 07 X X X G01 000

S=SATA Header
G=Male 07=7P
T=The harpoon
G=Ground lug

S=Straitght
M=SMT

B=BOX
C=TUBE
D=TAPE
REEL

G01=1UGold/Tin
G03=3UGold/Tin
G05=5UGold/Tin
G010=10UGold/Tin
G015=15UGold/Tin

| OPERATION | | DRAW | | SCALE | | FIT | | PART NO. | |
|-----------|--------------------------|-------------|---------|-------|----|-------|-----|----------|----|
| DIM | TOL | ANGLE | CHECK | UNIT | mm | PROJ. | 1/1 | SIZE | A4 |
| X.X | ±0.30 | | | | | | | | |
| X.XX | ±0.20 | | CHECK | | | | | | |
| X.XXX | ±0.10 | | | | | | | | |
| ±3° | | | APPROVE | | | | | | |
| DATE | MODIFICATION DESCRIPTION | CHANGE | | | | | | | |
| 1 | | | | | | | | | |
| A0 | 2014.04.27 | NEW DRAWING | | | | | | | |
| REV | | | | | | | | | |

深圳市连盛精密连接器有限公司
Shenzhen Liansheng Precision Connector Co., Ltd.

Recommended P.C.B Layout(Top Side)
(PCB BOARD TOLERANCE±0.05)