

RoHS

1. 材质:

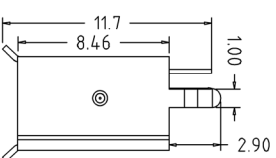
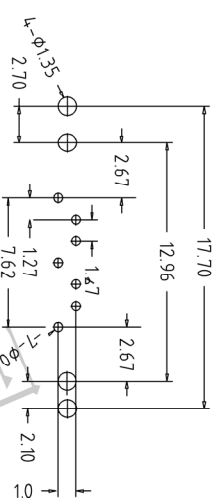
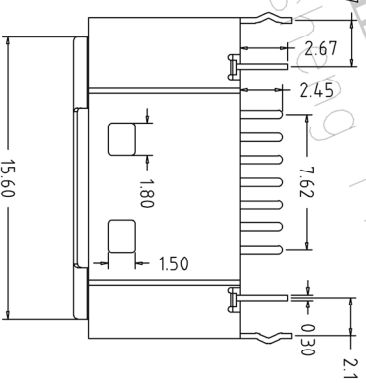
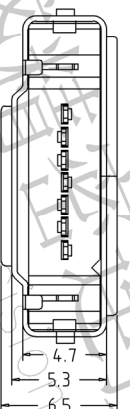
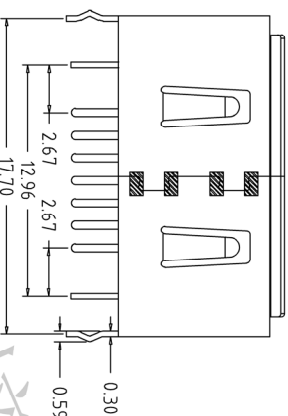
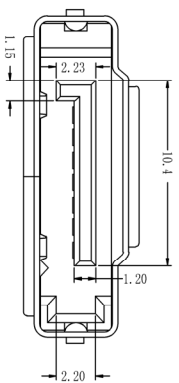
- 1.1 胶芯: LCP G/F UL94V-0 颜色: 黑色;
- 1.2 端子; 青铜. T=0.25 ±0.01mm(底镍50u", 镀锡100u", 接触区镀金1u", 3u", 15u");
- 1.3 铁壳: 马口铁. T=0.30 ±0.02mm, 先镀金镍100u" MIN, 镀亮锡50u" MIN;

2. 电气性能:

- 2.1 耐压: 500V AC/DC
- 2.2 绝缘: 1000MΩ min
- 2.3 温度: -55° C ~ +125° C

3. 测试要求:

- 3.1 塑胶外观无明显缩水、缺料;
- 3.2 端子表面不能扭曲、压伤、氧化;
- 3.3 接触电阻: ≤ 30mΩ



Ordering Information

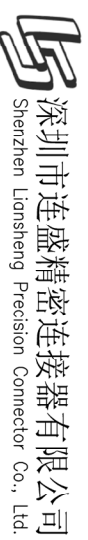
S G 07 X X X G01 000

S=SATA Header
G=Male 07=7P harpoon
T=The harpoon
M=SMT Lug

B=BOX
C=TUBE
D=TAPE REEL

G01=1UGold/Tin
G03=3UGold/Tin
G05=5UGold/Tin
G010=10UGold/Tin
G015=15UGold/Tin

OPERATION		DRAW		SCALE		FIT		PART NO.	
X.X	±0.30			UNIT	mm				
X.XX	±0.20	CHECK		SIZE	A4				
X.XXX	±0.10	APPROVE		SHEET	1/1				
Angle	±3°			PROJ.	☐				
DIM	TOL								
REV	DATE	MODIFICATION DESCRIPTION	CHANGE					TITLE:	SATA7P A型 带铁壳 弯脚
1									
A0	2014.04.27	NEW DRAWING							



深圳市连盛精密连接器有限公司
Shenzhen Liansheng Precision Connector Co., Ltd.

Recommended P.C.B Layout(Top Side)
(PCB BOARD TOLERANCE±0.05)