

# RoHS

## 1. 材质:

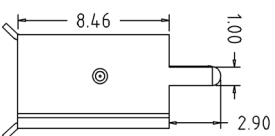
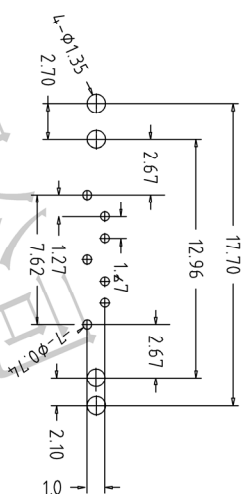
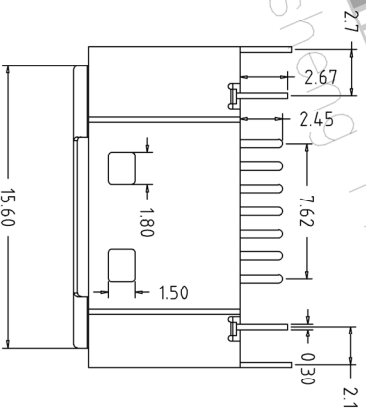
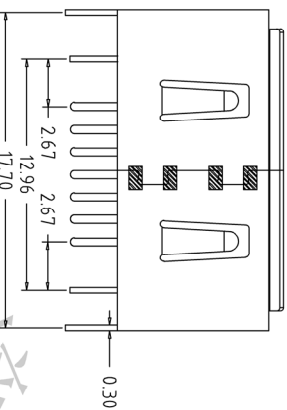
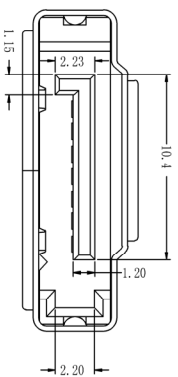
- 1.1 胶芯: LCP G/F UL94V-0 颜色: 黑色;
- 1.2 端子; 青铜. T=0.25 ±0.01mm(底镍50u", 镀锡100u", 接触区镀金1u", 3u", 15u");
- 1.3 铁壳: 马口铁. T=0.30 ±0.02mm, 先镀金镍100u" MIN, 镀亮锡50U" MIN;

## 2. 电气性能:

- 2.1 耐压: 500V AC/DC
- 2.2 绝缘: 1000MΩ min
- 2.3 温度: -55° C ~ +125° C

## 3. 测试要求:

- 3.1 塑胶外观无明显缩水、缺料;
- 3.2 端子表面不能扭曲、压伤、氧化;
- 3.3 接触电阻: ≤ 30mΩ



## Ordering Information

S G 07 X X X G01 000

S=SATA Header  
G=Male 07=7P  
T=The harpoon  
G=Ground Lug

S=Straight M=SMT  
B=BOX  
C=TUBE  
D=TAPE REEL

G01=1UGold/Tin  
G03=3UGold/Tin  
G05=5UGold/Tin  
G010=10UGold/Tin  
G015=15UGold/Tin

		OPERATION		DRAW		SCALE		FIT		PART NO.	
		X.X	±0.30			UNIT	mm			Shenzhen 深圳市连盛精密连接器有限公司 Shenzhen Liansheng Precision Connector Co., Ltd.	
		X.XX	±0.20	CHECK		SIZE	A4			SATA7P A型 带铁壳 直脚	
		X.XXX	±0.10	APPROVE		SHEET	1/1			TITLE:	
REV	DATE	MODIFICATION DESCRIPTION		CHANGE	DIM	TOL	PROJ.				
1	2014.04.27	NEW DRAWING									

Recommended P.C.B Layout(Top Side)  
(PCB BOARD TOLERANCE±0.05)

