

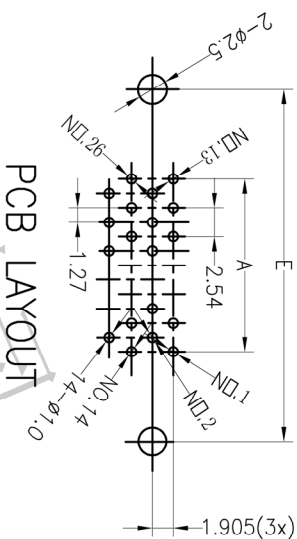
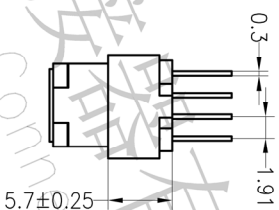
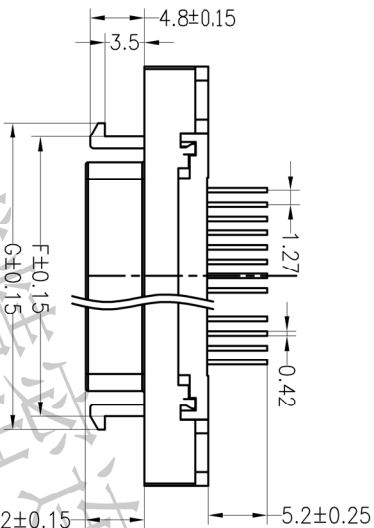
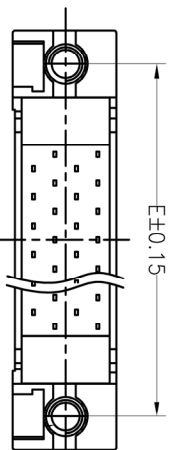
ROHS

MATERIALS
 Housing: Plastic Thermoplastic, PA9T, UL94V-0, Black
 Contact Material: Copper Alloy Gold Selective Plated
 Front Shell: Zinc Alloy, Nickel Plated Over Copper
 RoHS Compliant

ELECTRICAL CHARACTERISTICS
 Rated Current: 1.0AMP
 Withstand Voltage: 500V AC/DC
 Insulation Resistance: 500MΩ Min
 Contact Resistance: 35mΩ Max
 Operation Temperature: -55° c to +105° c

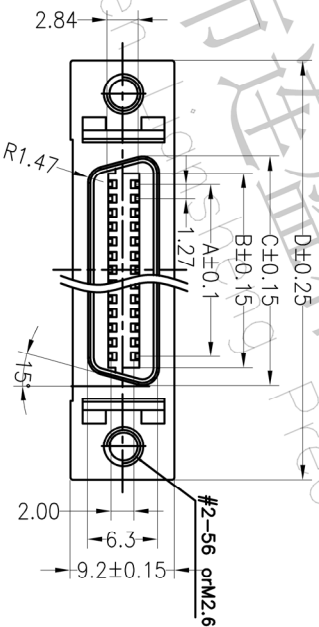
材质
 胶芯: 塑胶 PA9T UL94V-0, 黑色
 端子: 铜合金, 镀半金锡
 前壳: 锌合金, 镀镍

规格
 额定电流: 1安培
 最大耐电压: 交流500伏特
 绝缘电阻: 最小值大于500百万欧姆
 接触电阻: 最大值小于35千分之一欧姆
 工作温度: -55℃到+105℃



Ordering Information

F	225	S	X	X	X	X	001
Female	No. of Pins	Connector Type	Insulator Material	Material Option	Positioning	Shielding	Contact Plating
		S=Stright	A=BR-FR1	B=BR-FR1	A=FE	B=BCX	G111V Gold
		Z=Zinc	R=BR-FR1	O=Lure	O=Lure	O=Lure	G2130V Gold
		W=无铅	D=BR-LOP	E=Feet+Cop	F=Feet+Myor	S=Steel	G350V Gold
			S=Steel				G550V Gold
							SnCoat Flash/Tm
							SN/Tm



No. of Pin		DIMENSIONS						
A	B	C	D	E	F	G		
50	30.48	32.45	35.39	52.37	46.5	40.0	41.44	

深圳市连盛精密连接器有限公司
 Shenzhen Lionsheng Precision Connector Co., Ltd.

PART NO.

TITLE: 信号连接器 母座 50P DIP

REV	DATE	MODIFICATION DESCRIPTION	CHANGE	OPERATION	DRAW	SCALE	FIT	PROJ.
A0	2012.03.28	NEW DRAWING		X.XX ±0.30 X.XXX ±0.15 X.XXX ±0.10	CHECK	UNIT mm	A4	1/1
1				Angle ±3°	APPROVE	SIZE A4		
				DIM TOL		SHEET		
						PROJ.		