

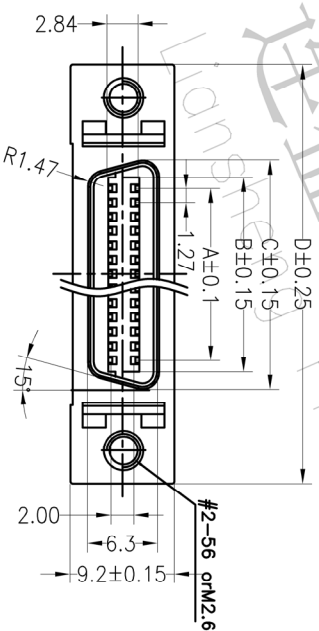
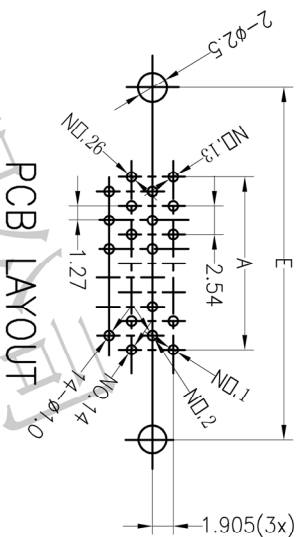
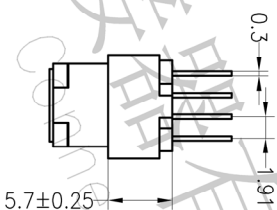
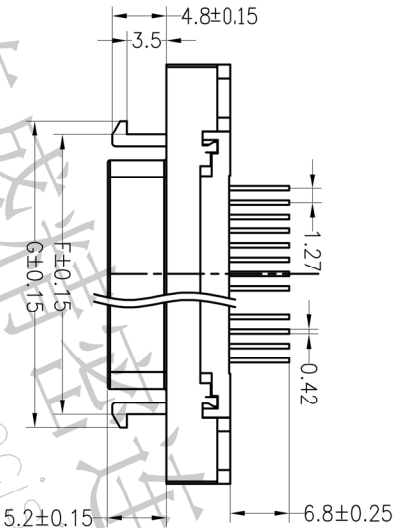
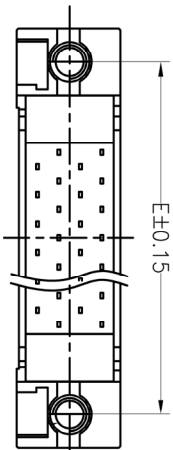
ROHS

MATERIALS
 Housing: Plastic Thermoplastic, PA9T, UL94V-0, Black
 Contact Material: Copper Alloy Gold Selective Plated
 Front Shell: Zinc Alloy, Nickel Plated Over Copper
 RoHS Compliant

ELECTRICAL CHARACTERISTICS
 Rated Current: 1.0AMP
 Withstand Voltage: 500V AC/DC
 Insulation Resistance: 500MΩ Min
 Contact Resistance: 35mΩ Max
 Operation Temperature: -55° c to +105° c

材质
 胶芯: 塑胶 PA9T UL94V-0, 黑色
 端子: 铜合金, 镀半金锡
 前壳: 锌合金, 镀镍

规格
 额定电流: 1安培
 最大耐电压: 交流500伏特
 绝缘电阻: 最小值大于500百万欧姆
 接触电阻: 最大值小于35千分之一欧姆
 工作温度: -55℃到+105℃



Ordering Information

6300 F 225 S X X X X X 001

Female Pin No. 225P
 Connector Type S
 Insulator Material X
 Positioning Option X
 Contact Plating 001

Connector Material: A=BR-FRT, B=BR-FRT, C=BR-FRT, D=BR-LOP, S=Stainless Steel
 Positioning: A=FE Bag, B=BCX, C=Tube-Cap, E=Feet-Cap, F=Feet+Mylar
 Contact Plating: G111V Gold, G213V Gold, G320V Gold, G350V Gold, G550V Gold, SDCold Flash/Tm, SN/Tm

No. of Pin	DIMENSIONS						
	A	B	C	D	E	F	G
50	30.48	32.45	35.39	52.37	46.5	40.0	41.44

深圳市连盛精密连接器有限公司
 Shenzhen Liansheng Precision Connector Co., Ltd.

OPERATION		DRAW		SCALE		FIT		PART NO.	
X.X	±0.30	X.X	±0.30	UNIT	mm	SIZE	A4	SHEET	1/1
X.XX	±0.15	CHECK	CHECK	PROJ.	◆	TITLE:	信号连接器 母座 50P DIP		
X.XXX	±0.10	APPROVE	APPROVE						
Angle	±3°								
DIM	TOL								
CHANGE									
MODIFICATION DESCRIPTION									
DATE									
REV									
A0	2012.03.28	NEW DRAWING							