

ROHS

MATERIALS
 Housing: Plastic Thermoplastic, PA9T, UL94V-0, Black
 Contact Material: Copper Alloy Gold Selective Plated
 Front Shell: Zinc Alloy, Nickel Plated Over Copper
 ROHS Compliant

ELECTRICAL CHARACTERISTICS
 Rated Current: 1.0AMP
 Withstand Voltage: 500V AC/DC
 Insulation Resistance: 500MΩ Min
 Contact Resistance: 35mΩ Max
 Operation Temperature: -55°C to +105°C

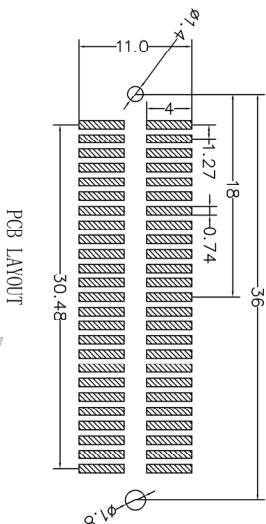
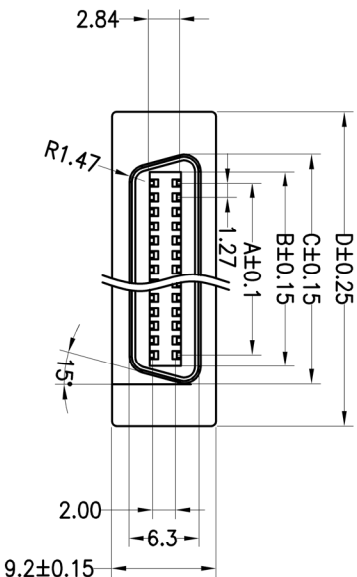
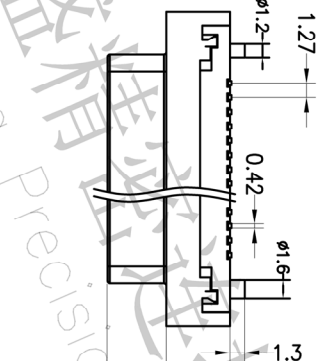
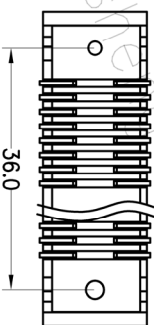
材质
 胶芯: 塑胶 PA9T UL94V-0, 黑色
 端子: 铜合金, 镀半金锡
 前壳: 锌合金, 镀镍

规格
 额定电流: 1安培
 最大耐电压: 交流500伏特
 绝缘抗阻: 最小值大于500百万欧姆
 接触阻抗: 最大值小于35千分之一欧姆
 工作温度: -55℃到+105℃

Ordering Information

6300 F 225 M X X X X 001

F=Female	No. of Pins Row 2X25P	Connector Type S=Straight R=Right Angle M=SM Z=特殊 W=插板脚	Insulator Option A=BK-PBT B=BK-PAET D=BK-ICP S=Special	Material A=PE B=BOX C=Tube D=Tube+Cap E=Reel+Cap F=Reel+Mylar	Packing Bog	Contact Plating G1:1U" Gold G2:1.5U" Gold G3:2U" Gold G4:3U" Gold G5:5U" Gold S0:Gold Flash/Tin SMTin
----------	-----------------------	---	--	---	-------------	---



No. of Pin	DIMENSIONS			
	A	B	C	D
50	30.48	32.45	35.39	45.00

深圳市连盛精密连接器有限公司
 Shenzhen Liansheng Precision Connector Co., Ltd.

REV	DATE	MODIFICATION DESCRIPTION	CHANGE	OPERATION		DRAW	CHECK	APPROVE	SCALE	FIT	PART NO.	TITLE:
				DIM	TOL							
A0	2012.03.28	NEW DRAWING		X.X	±0.30				mm	A4		信号连接器 母座 50P SMT 带柱
1				X.XXX	±0.10					1/1		