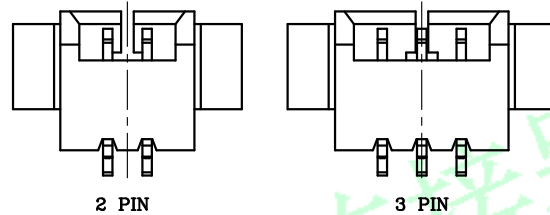
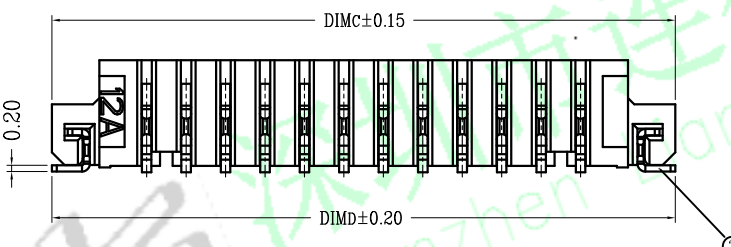
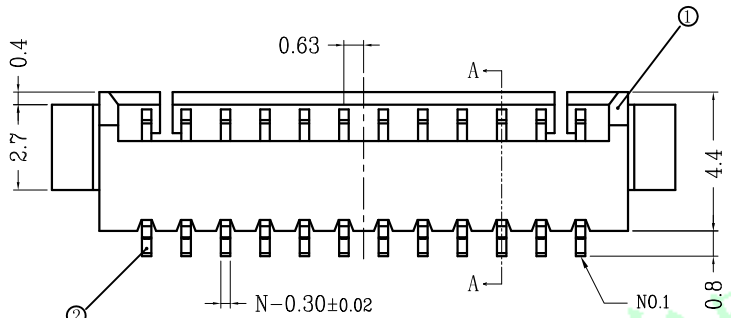
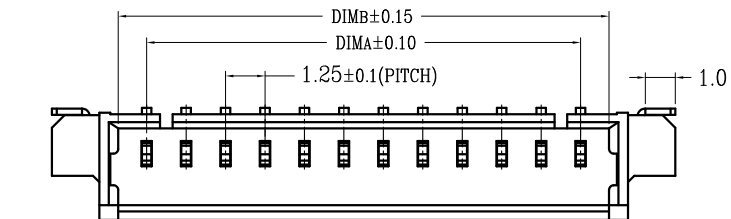
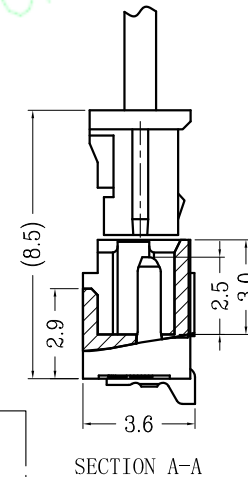
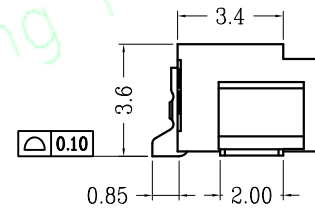
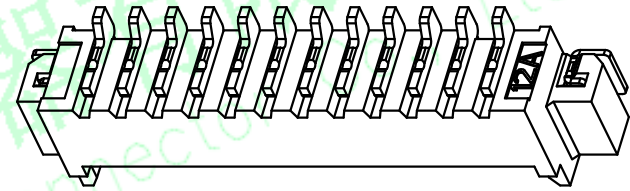


RoHS

序号	品名	材质
①	1.25 A型卧式WTB胶芯	LCP UL94V-0 本色
②	1.25 A型卧式WTB端子	铜合金/表面镀锡
③	1.25 A型卧式WTB焊片	铜合金/表面镀锡

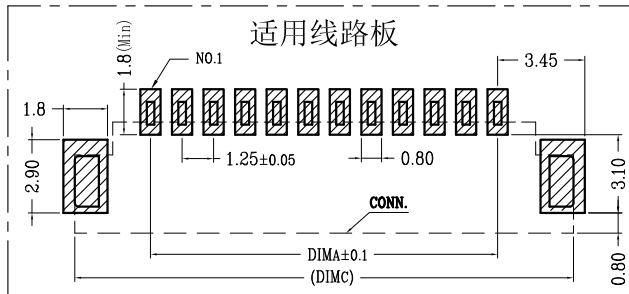


LOCK CONFIGURATION (锁扣结构)



CKT	DIM A	DIM B	DIM C	DIM D
2	1.25	3.05	7.25	7.25
3	2.50	4.30	8.50	8.50
4	3.75	5.55	9.75	9.75
5	5.00	6.80	11.00	11.00
6	6.25	8.05	12.25	12.25
7	7.50	9.30	13.50	13.50
8	8.75	10.55	14.75	14.75
9	10.00	11.80	16.00	16.00
10	11.25	13.05	17.25	17.25
11	12.50	14.30	18.50	18.50
12	13.75	15.55	19.75	19.75
13	15.00	16.80	21.00	21.00
14	16.25	18.05	22.25	22.25
15	17.50	19.30	23.50	23.50
16	18.75	20.55	24.75	24.75
17	20.00	21.80	26.00	26.00
18	21.25	23.05	27.25	27.25
19	22.50	24.30	28.50	28.50
20	23.75	25.55	29.75	29.75

- 技术指标:
1. 塑件表面应光洁、无毛边、无明显收缩、缺陷、裂纹等现象。
 2. 锁扣窗口: 2~3PIN为1个, ≥4PIN为2个。
 3. 温度范围: -25° C~85° C.
 4. 额定电压: 125V, AC.
 5. 接触电阻: ≤20mΩ(Initial) per contact, ≤40mΩ Change allowed.
 6. 绝缘电阻: ≥100MΩ.



REV	DATE	MODIFICATION DESCRIPTION	CHANGE	OPERATION	DRAW	黄喜俊	SCALE	FIT	 深圳市连盛精密连接器有限公司 Shenzhen Liansheng Precision Connector Co., Ltd.
				X.X	±0.30		UNIT	mm	
				X.XX	±0.20	CHECK	SIZE	A4	
				X.XXX	±0.10		SHEET	1/1	
				Angle	±3'	APPROVE	PROJ.	◆	
				DIM	TOL	李双			
							PART NO.		
							TITLE:		1.25-1*NP NAWR