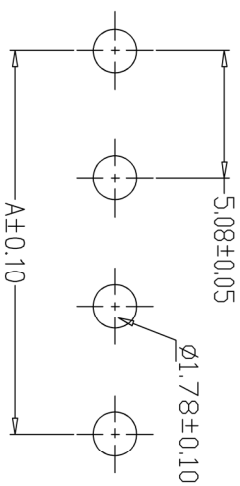
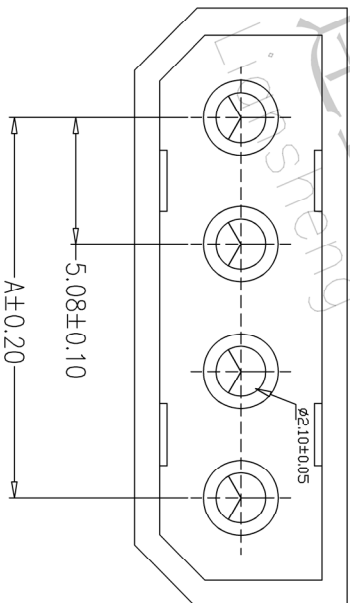
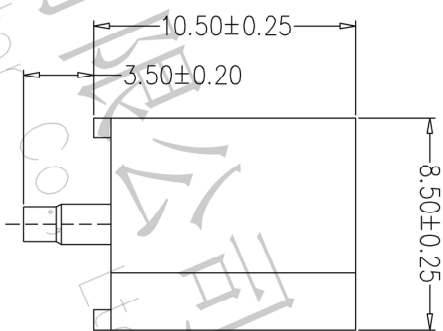
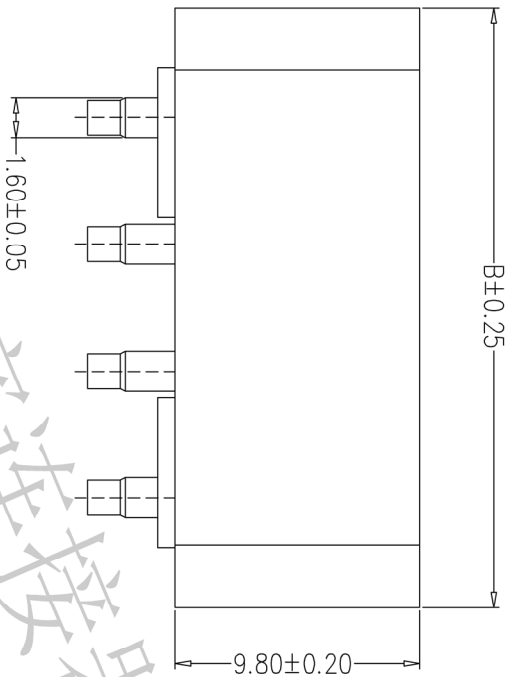


RoHS

SPECIFICATIONS

- 1、 Current Rating: 10A AC, DC
- 2、 Voltage Rating: 250V AC, DC
- 3、 Temperature Range: -25°C~+85°C
- 4、 Contact Resistance: 20mΩ Max
- 5、 Insulation Resistance: 1000MΩ Min
- 6、 Withstanding Voltage: 1500V AC/minute
- 7、 Material: Wafer Nylon66, UL94V-0
PIN Brass Tin-plated



PCB LAYOUT



深圳市连盛精密连接器有限公司
Shenzhen Linsheng Precision Connector Co., Ltd.

| OPERATION | DRAW | SCALE | FIT | PART NO. |
|------------|--------------------------|-------|-----|------------|
| X.X | 黄 喜 俊 | UNIT | mm | 大四P 空心带边直针 |
| X.XXX | CHECK | SIZE | A4 | |
| X.XXX | 卢 能 | SHEET | 1/1 | |
| Angle | 李 双 | PROJ. | | |
| ±3° | | | | |
| ±0.10 | | | | |
| APPROVE | | | | |
| DIM | | | | |
| TOL | | | | |
| CHANGE | | | | |
| DATE | MODIFICATION DESCRIPTION | | | |
| 2012.03.28 | NEW DRAWING | | | |
| REV | | | | |

| | | | | | | | | |
|---|---|---|---|---|---|---|---|---|
| 1 | 2 | 3 | 4 | 5 | 6 | 7 | 8 | 9 |
|---|---|---|---|---|---|---|---|---|